



HEALTHCARE FITOUT SPECIALISTS



📍 Unit 16, 78 Reserve Road, Artarmon NSW 2064
☎ +61 (2) 9805 6100
✉ info@jdvgroup.com.au
🌐 jdvprojects.com.au

jdv projects
exceptional projects • enduring relationships

YOUR HEALTHCARE PROJECT

JDV have been designing and creating inspiring and functional healthcare spaces for Medical Practitioners since 2005.

Our close working relationship with our clients from the outset ensures that each finished suite, office or medical facility represents the individual personality of the business, whilst also remaining efficient and practical in design.

At JDV Projects, we strive to be at the forefront of design and workplace evolution. We engage designers with extensive experience in the healthcare industry to ensure that whatever your medical specialisation or technical requirements, we will select the ideal team for your project vision, design style and budget.

We will assist you to maximise the utilization and productivity of your space helping you to provide a professional environment and the level of care your patients deserve. We understand that there are a variety of key considerations within healthcare facilities and will meet these considerations and challenges with a solution tailored to you and your project.

Key considerations:

- Specialised equipment
- Facility and space planning
- Adherence to company brand/style
- Material longevity, sterility
- Low maintenance and budget conscious solutions
- Statutory compliance and standards

By combining the importance of functionality and aesthetics, we will work with you to create a brief and vision that is both innovative and commercially realistic.

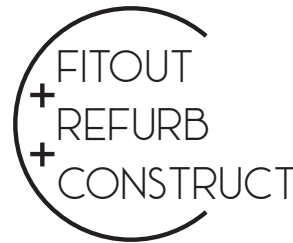
Our mission is to align ourselves with your business objectives and aspirations to create an efficient and productive environment with the ability to flex and adapt as your organisation evolves.

Our seamless end-to-end service is an integrated approach to design & construct. You will have one point of throughout your project and full visibility of the programme and progress every step of the way.

We can assist with a full turn-key solution, or simply help with one of the delivery methods in the process most appropriate for your budget, timeline and vision.

ABOUT JDV PROJECTS

Our business is built upon creating extraordinary workspaces and developing enduring relationships.



Now in our 24th year delivering workplace fit out and construction projects, the team at JDV will work with your business to create an extraordinary workplace and develop an enduring relationship with your business.

With capability and track record in projects ranging from \$20K to more than \$20 Million across the Eastern seaboard states, our interiors, refurbishment and commercial construction teams work seamlessly to deliver your project on time, on budget & to the highest standard possible without compromise.

Our business is built upon our core values of trust, loyalty, respect and integrity. Our valued clients and business partnerships ensure that continued referrals and repeat business is testament to the service and experience we deliver.

At JDV Projects, we recognise that our reputation is only as good as our last project, therefore every project, large or small is executed with the same level of commitment, professionalism and attention to detail.

JDV Projects bring a unique approach to the fit-out industry. We have an experienced team who have a range of specialisations to ensure that whatever your unique requirements, or industry, we will select the ideal team for your project and vision. We have a commitment to excellence and will meet your challenges with solutions to ensure that working with us is a positive journey; before, throughout and after your project is complete.

THE JDV LEADERSHIP TEAM



JASON DE VOS
Managing Director

A degree qualified construction professional, Jason founded JDV Projects in 1997.

With over 30 years industry experience across all facets of Construction and Refurbishment, Commercial Interiors, Multi-storey large Residential and Industrial construction.

Jason is committed and focused on ensuring our clients obtain the value they seek and the experience they deserve.

Jason has assembled an exceptionally talented and committed team at JDV. Whilst being steadfastly client focused and applying a wealth of knowledge and know-how across a broad range of construction challenges, his reputation for maintaining a connection to each project is key to the success of the JDV Projects business and the relationships he has developed and maintained.



RAY LEVIN
General Manager

Ray's role as General Manager is to ensure that all operational aspects of the JDV Projects business run smoothly and cohesively and to manage projects and client relationships throughout the project lifecycle.

Ray has a qualification in Project Management, has been in the construction industry for 30 years and ran his own construction and project management businesses in South Africa prior to emigrating to Australia. In Australia, Ray has worked with Tier 1 commercial construction companies across a diverse range of projects including refurbishment, fitout, healthcare, aged care, education, government sector & large scale residential. Ray's experience and professionalism ensure our clients are receiving the very best advice, guidance & professional service they expect throughout the entire project cycle.



PROCESSES & SERVICES

At JDV we provide a seamless end-to-end service for our clients.

At JDV we use an integrated approach to assist during the design phase and deliver a unique and efficient environment.

From the initial Consultation and Briefing through to handover and warranty service, you will have one point of contact for your project. You will have full visibility of the programme and progress and a trusted professional will be on hand to answer any queries and to keep you up to date every step of the way.

JDV will work closely with you to ensure that your drivers for change are at the forefront throughout the process.

We provide a seamless end-to-end service for our clients. This service can be tailored for each client but typically involves 2 distinct service offerings delivered as an integrated management service. We can assist with a full turn-key solution, or simply help with one of the steps in the process.

JDV will work with you to suggest the most appropriate delivery method for your budget, timescale and vision.

OUR 6-STEP PROCESS



BRIEF
PROCESS CHANGE
SPACE REQUIREMENTS
PROPERTY

We will spend time with you to understand your brief, your requirements, both now and in the future.

Your drivers for change are as important from your space and design requirement to your desire for process change within your company.

We will discuss your vision and needs and provide concepts that respond to your business activity and interaction between staff and teams.

We would agree with you a process and map out the steps in the journey – a new work place can be a catalyst for introducing process change or improvements within a business.

JDV will work with you, if required, to identify and assess premises for suitability and performance. We will prepare a test fit to ensure the proposed location can satisfy the project brief.



CONCEPTS & VISION
BUDGET OBJECTIVES
COST PLAN
ROADMAP

JDV Projects will produce a comprehensive sketch or preliminary planning concepts to match your vision and needs, focusing on workspace organisation while exploring new ideas and fresh concepts in work practices and space planning that respond to your business activity and interaction between staff and teams.

We will prepare a detailed preliminary cost plan and review to ensure it meets the budget objectives whilst being realistically achievable – this provides a road map to the project's financial management and control against which future design and specification decisions can be made.

Implement a strategic approach to incorporate and evaluate the 'must-have' versus the 'like-to-have' elements and features and discuss technology options and the most recent improvements and trends available for the clients project.



DESIGN OPTIONS
3D MODELLING
STATUTORY APPROVALS

With your chosen designer, we will develop a number of options that will give the best solution for the best outlay.

3D modelling can show clients first-hand what the working environment will look like – whether it be the latest in staff breakout facilities, office décor, internal living green walls or contemporary reception designs, an image board for discussion about the look and feel of the new workspace will also be produced.

All Statutory Approvals will be dealt with by JDV.



VALUE ENGINEERING
LEVERAGE INDUSTRY RELATIONSHIPS
COST V'S FUNCTIONALITY

New, modern and cutting edge does not have to mean expensive – our experience and industry relationships will ensure you get the best available look and feel, technology and industry trends at a price you can afford.

With careful value engineering for your workspace, JDV can present options for the substitution of materials and methods with a less expensive alternative, however by no means sacrificing functionality or results.



CONSTRUCTION
ONE POINT OF CONTACT
HANDOVER
RELOCATION

Our experienced project and site managers will translate the final plans in to the end result and ensure your final environment or build is as it was designed, documented and approved.

Surprisingly, the construction phase often takes the least amount of time – once the final documentation is agreed upon, you will be surprised at what can be achieved in the short programme.

When it comes to construction, the partnership between our Project Managers and Site Manager is exemplary. Communication between them and you - the client - is a key priority, from the beginning until your handover day.

Relocation should be equally as trouble free. The move is well planned and executed with a streamline process.



MAINTENANCE
TRAINING
WARRANTIES
ONGOING SUPPORT

A full detailed list of maintenance and warranty details will be available on handover, ensuring all training and warranties are in place

JDV Projects and the team will still be there for you after handover and will work with you over the coming months to ensure everything works as it should.

JDV pride ourselves on long-standing relationships, and will be available to you long after the project is complete.

HEALTHCARE CLIENTS & EXPERIENCE

JDV Projects offered us a fresh new approach when it came to the Design and Construct of our new practice, so much so that we commissioned JDV to complete a 2nd practice 6 months later. The project team took the time to listen, understand and interpret what we needed in our practice...it was clear from the outset that Jason and the JDV Projects team knew what they were doing and we were in capable hands.

*Prof. Munjed Al Muderis
MB ChB FRACS FAOrthA, Orthopaedic Surgeon*

Since our inception 24 years ago, JDV Projects have worked with some of the most prominent healthcare professionals in Australia. We are proud to call them clients, with whom we have built long-lasting relationships.

Clinics, Hospitals & institutions include:

Brellah Healthcare
Eastern Suburbs Dermatology
Healthcare
HPS Pharmacies
Hurstville Private Hospital
Hurstville Urology
Neurosensory Audiology Clinics
Northern Beaches Hospital
Northern Beaches Psychologist and Psychiatrist Family Practice
Norwest Physiotherapy and rehabilitation clinic
Norwest Private Hospital
Norwest Sports and Arthritic Clinic
Peninsula Gastroenterology
Peninsula Orthopaedics
SAN Clinic
Southern North East Healthcare
Southridge Medical Centre
St George Private Hospital Medical Suites
St Vincents Private Hospital
Sydney Adventist Hospital
Sydney Breast Clinic
Sydney Cancer Genetics
Sydney Cardio Vascular Clinic
Sydney Southwest Private Hospital
Terry Hills Dental
The Cardiac Health Institute
The Hills General Practice
Top Health Medical Centre

Medical Professionals include;

Professor Munjed Al Muderis

Dr Tack Shin Lee

Dr Corey Cunningham

Dr Brian Jones

Professor Tristan Yan

Dr Probal Roy

Dr Payal Mukherjee

Dr Imad Mahmoud

Dr Hilda High

Dr Thierry Vancaillie

Dr Jason Sharp

Dr Probal Roy

Dr Imran Kassam

Dr Gary McKay

Dr Yayan Chan

Dr Blessy John

Dr Oliver Florica

Orthopedic Surgeon

Orthopedic Surgeon

GP

Gastroenterologist

Cardio Thoracic Surgeon

Cardiologist

Ear Nose and Throat Surgeon

Obstetrician and Gynecologist

Oncologist & Cancer Geneticist

Gynecologist & Pain Management

Cardiologist

Cardiologist

Cardiologist

Colorectal Surgeon

Dentist

Pediatrician

Gastro banding Specialist

Dr David Wong

Dr James Rohrsheim

Dr Jackson Chen

Dr Cathy Lee

Dr Toni Addington

Dr Ann Wajon

Dr Michael Tjeuw

Dr Randolph Gray

Dr Oliver Florica

Dr Ben Er

Dr Mark Hile

Dr David Dickinson

Dr Matt Sherlock

Dr Rob Sew Hoy

Dr Max Dias

Dr Viswanathan Venkatachalam

Dr Lisa Robinson

Dermatologist

Orthopedic Surgeon

GP

Obstetrician

Dentist

Hand Therapy

Rheumatologist

Spinal Surgeon

Bariatric Surgeon

Pediatrician

Orthopaedic Surgeon

Orthopaedic Surgeon

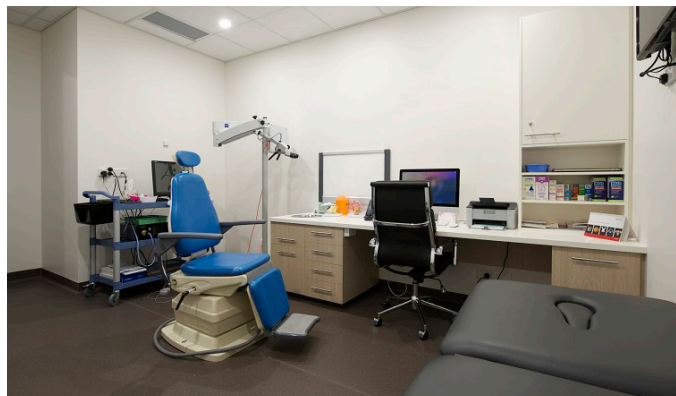
Orthopaedic Surgeon

Orthopaedic Surgeon

Urological Surgeon

Cardiologist

Obstetrician/Gynaecologist



HEART & BEYOND

The team at JDV Projects are excited to hand over our tenth medical suite fitout at the SAN Parkway Clinic in Wahroonga. Heart and Beyond is a specialist cardiology centre run by Dr Viswanathan Venkatachalam, an interventional cardiologist who has a belief and mission to deliver care with positivity and happiness.

In line with this philosophy, the suite was designed and constructed to be a warm and welcoming space that is the antithesis of the traditional stark and clinical design model of healthcare facilities.

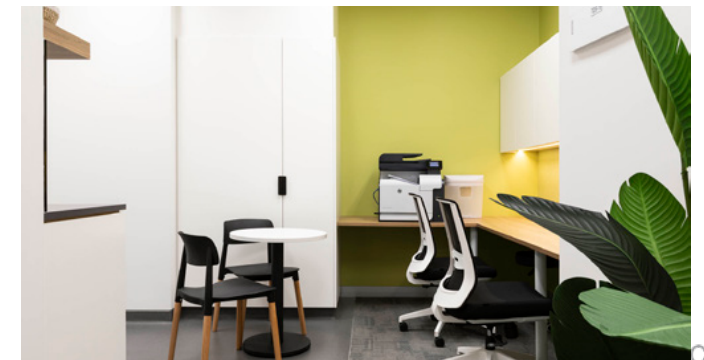
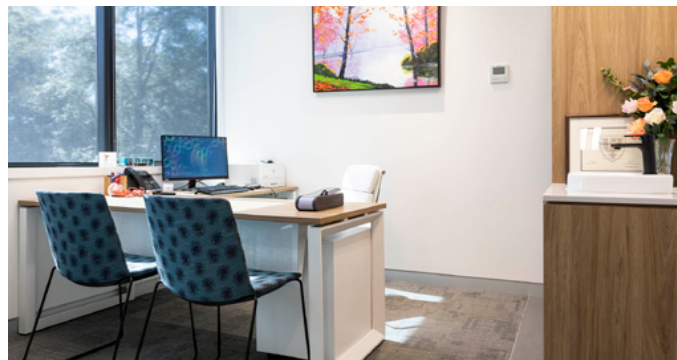
Clever space-planning has maximised the use of the modest 123sqm space, incorporating three consulting rooms, a stress-testing lab and echo room. A generous reception area provides seating for ten patients using the Heart & Beyond brand palette for the seating and bespoke banquette area. Tucked in behind reception is a back-of-house office and a generous kitchen and breakout area for the team.

The warm timber finishes are complimented by a planted green wall and a variety of artwork including one which features positive affirmation statements that display Dr Viswa's philosophy to patient treatment.

Client: Dr Viswanathan Venkatachalam

Project Size: 123sqm

Delivery Method: Design & Construct





Amazing an experience with team JDV,
A team that converts you and me to WE!
A journey they take you on so memorable,
A team to be with to be far from trouble!
Jason De Vos the captain so dedicated,
Takes us through plans well contemplated
To seek out to build your dreams he never tires!
A passion for sublimity in him everyone admires!
I must mention pleasant a General manager Ray,
He comes on site to pave smooth a journey our way!
Meet the dynamic project manager Jason Trezise,
Feel your worries dissolving seeing his ideas precise!
Contracts administrator is blue eyed young Sean,
Pleasant a demeanour, takes every call dusk or dawn!
Forget can I to thank the one with whom it did click !
He who held out the trump "card", friendly dear Mick!
A delightful journey one enjoys with JDV free of stress,
A maze of worries they let you get through I must confess !
Easy to approach, best to interact, put all qualms to rest,
When it's your dream project, you need none but the best.
Their work speaks for itself, need I elaborate more?
To a world of excellence, thanks to whom, we opened the door!

Dr Viswanathan Venkatachalam, Cardiologist



PENINSULA ORTHOPAEDICS

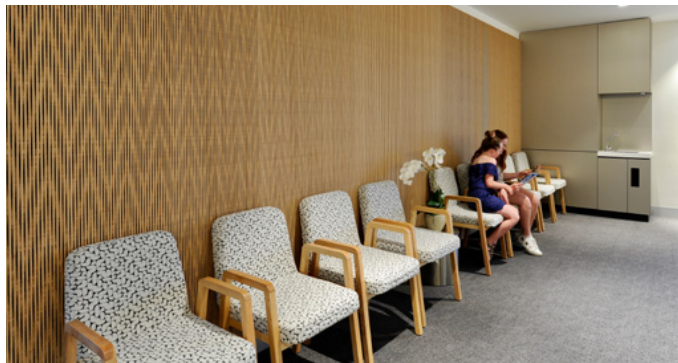
The new home for Peninsula Orthopaedics is located in the new state-of-the-art Northern Beaches Hospital. Situated on the 7th floor, the stunning new medical facility offers impressive views across the Northern Beaches.

Entry is gained through large glass sliding doors where patients are greeted by an impressive eight-person reception which caters to the seven consulting rooms, one hand therapy room and two cast rooms within the clinic.

The modern and bright reception area has comfortable surroundings and seating for fifty patients, using a custom-made circular banquette as a focal point. The area features a range of bespoke elements and is complimented by vibrant colours and subtle lighting which creates a warm and welcoming environment as opposed to a stark and clinical environment.

The use of environmentally friendly products can be seen throughout the space. Materials include Plyboo, a natural bamboo timber which creates a textured acoustic featured wall behind the signage and a hand-crafted environmentally-friendly panelling from Stonini – an innovative and customisable product is used behind the reception counters walls creating warm and texture to the space. The custom-built curved reception counters use Marblo solid surface and Plyboo to complete the warm and inviting appeal of the practice. The back-of-house office houses a bright and open work environment for the team with workstations, a break-out space and utilities.

Client: Peninsula Orthopaedics
Project Size: 450sqm
Delivery Method: Design & Construct



The fit out for Peninsula was a big and complicated project, tricky at times, having multiple parties to consult and coordinate with; however, JDV managed things effectively, efficiently and professionally and achieved a fabulous outcome for our group.

They have that rare “can do” attitude and I cannot recommend them highly enough. It was a big project handled professionally in every way. Thank you JDV!

*Jenny Slatyer, Business Manager
Peninsula Orthopaedics & Sports Medicine*



DR. RANDOLPH GRAY

The new Parkway SAN Clinic building based at the Sydney Adventist Hospital is creating a hub of specialist practitioners in Wahroonga, separate from the hospital location whilst close enough for convenient access.

In addition to his current suites, Orthopaedic and Spinal Surgeon Randolph Gray engaged JDV Projects to create his first dedicated medical suite at this new and impressive building.

The 100sqm space has been designed with an efficient use of space and logical flow, to accommodate 3 consulting rooms and a small breakout space. The generous reception area features a 2-person reception desk and seating for 14 patients with a feature upholstered banquette seating.

A colour palette of earthy neutral tones is complimented by stone finishes and timber wall panelling to create an elegant and refined environment for Dr. Gray's practice.

Client: Dr. Randolph Gray
Project Size: 100 sqm
Delivery Method: Design & Construct



JDV Projects have a highly professional team that did an excellent job; starting with the planning of the project through to its execution. I would highly recommend this great team.

Dr. Randolph Gray, Spinal Surgeon - SAN Parkway Clinic



HILLS GENERAL PRACTICE

Working early on in the project with the owners of this new Medical Practice in Kellyville was key to the transformation of a rundown building into a fresh new medical facility for The Hills General Practice.

Viewing the location on a busy road as an opportunity, JDV Projects refurbished the existing building to increase its street-appeal and visibility in order to maximise the potential of the location to attract a new client base from the local area.

As the JDV team knows, it is imperative when defining requirements for medical suite functionality, it goes beyond the aesthetic look and feel, incorporating culture, productivity and workspace strategy to produce efficiencies in the delivery of care, safety for both patients and staff and in general an improved patient experience. Working with our designer in medical facilities, the JDV team created a first rate facility for the client.

Refreshing the exterior of the building was as important as the interior when they began work on creating this new space, using a similar colour palette both inside and out. The exterior was freshly painted and new signage erected so capture the attention of local traffic. The internal design and feel delivers a refreshing entry through the front doors to the welcoming reception. Ample seating areas and consult rooms are available, as well as a pathology room and a first rate physiotherapy and rehabilitation area for clients.

Client: Dr Cory Cunningham
Project Size: 300 sqm
Delivery Method: Design & Construct



DR MAX DIAS

The new medical suite for Dr Max Dias is the perfect example of design and elegance.

Showcasing 2 consultant rooms, a treatment room, practice managers office, kitchen and impressive reception desk, the move from the SAN Hospital to the new SAN Parkway has given Dr Dias a fresh new space to see his patients.

The suite utilises every inch of the 86sqm with a commanding front reception with under bench lighting and panelled wood work on entry.

Client: Dr. Max Dias
Project Size: 86 sqm
Delivery Method: Design & Construct

I would like to thank the JDV team for delivering a beautiful and functional suite.

Their early involvement and collaboration with the designer has resulted in a functional, spacious and aesthetic design and a seamless balance between clinical and a stylish, warm space.

Dr Max Dias, Urological Surgeon -SAN Parkway Clinic



PROFESSOR TRISTAN YAN

The new Tulloch Building in the SAN Hospital Wahroonga is home to Professor Tristan Yan, Cardiothoracic Surgeon. JDV Projects worked closely with Prof Yan and his team to create his third clinic here in Sydney.

With 3 consult rooms, reception, waiting area the design and space is an excellent example of what can be achieved working with the team at JDV.

Client:	SAN Hospital Wahroonga
Project Size:	122 sqm
Delivery Method:	Design & Construct





ST VINCENT'S PRIVATE HOSPITAL PHARMACY

As a long-time client of JDV Projects, HPS Pharmacies required a new build for their Retail Pharmacy space at St Vincent's Private Hospital Darlinghurst.

Working within the hospital environment and below an operating theatre, noisy works constraints and hospital guidelines during a COVID pandemic here in Sydney meant the team had to work very closely with the hospital staff during the project.

The Pharmacy included a retail space, dispensary for the hospital and impressive 1.7 tonne worth of Willach metal shelving.

Client:	St. Vincents Hospital
Project Size:	190 sqm
Delivery Method:	Construction Management



DR MICHAEL TJEUW

The new Parkway SAN Clinic building based at the Sydney Adventist Hospital is creating a hub of specialist practitioners in Wahroonga, separate from the hospital location whilst close enough for convenient access.

Consultant Rheumatologist Dr Michael Tjeuw engaged JDV Projects to design and build his first dedicated consulting rooms for his practice.

The 88sqm space is open to the natural light and boasts scenic views across the nature reserve behind the Parkway building. With this in mind, the space has been planned so that the larger 2 of the 3 consulting rooms can enjoy this light and view.

The welcoming reception area comprises of a 3-person reception desk and a feature banquette providing seating for 12 patients.

Timber finishes create a soft and earthy feel and splashes of teal blue provide a pop of colour.

Dr. Tjeuw's personality and brand is created with the use of his personal artwork to create focal points around the consulting practice.

Client: Dr. Michael Tjeuw
Project Size: 88 sqm
Delivery Method: Design & Construct



JDV projects made the whole process of design and fitout of our medical specialist rooms a straightforward, well thought-out and smooth process.

We felt our needs were listened to...And that took away a lot of stress that's normally involved in a new build.

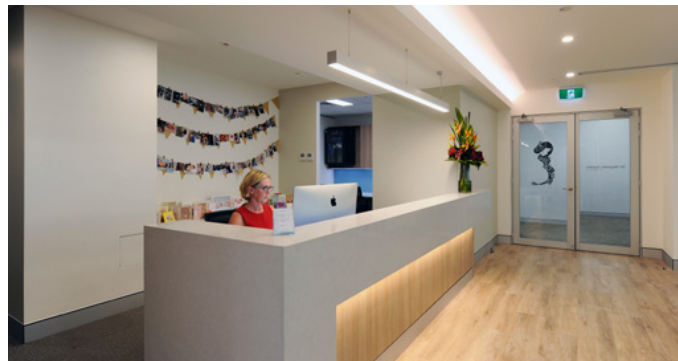
We would highly recommend JDV Projects to other healthcare professionals

Dr. Michael Tjeuw, Rheumatologist Consultant - SAN Parkway Clinic

SOUTHERN NEST

Southern Nest is a Healthcare and Consult Medical suite for Dr Alex Izurieta, specialist Obstetrician and Gynaecologist. Bursting with colour and light the suite offers a large reception and waiting room with kids play area, a number of office spaces with procedural facilities and gym area.

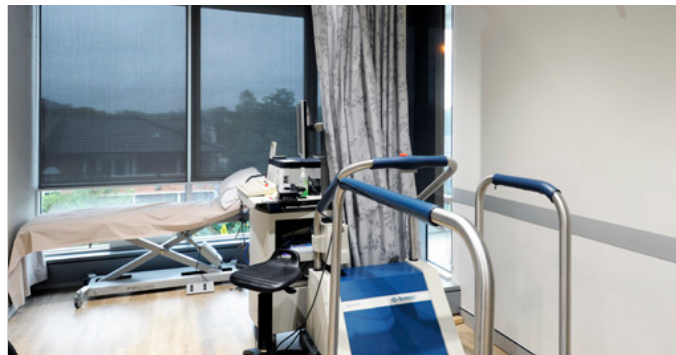
Client: Hurstville Private Hospital
Project Size: 200sqm
Delivery Method: Design & Construct



CARDIAC HEALTH INSTITUTE

New specialist cardiac consult center in the heart of Epping. Featuring 2 specialist stress labs, 2 x Echo rooms and 4 consult suites as well as an impressive reception and waiting area.

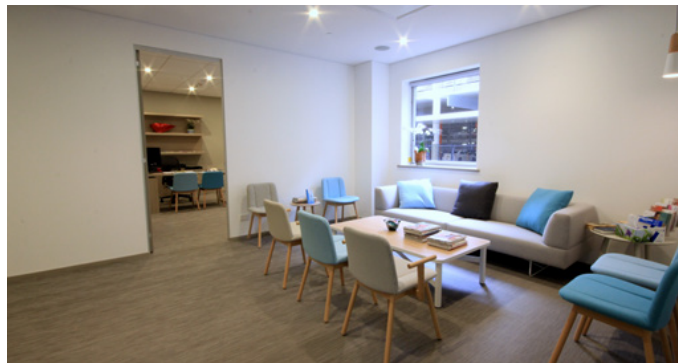
Client: Cardiac Health Institute
Project Size: 230 sqm
Delivery Method: Design & Construct



DR JONES CLINIC

The SAN Hospital Wairoanga are currently going through the redevelopment of the Tulloch Building on the hospital site and Dr Brian Jones has engaged JDV Projects in the Construction Management of his new Gastroenterology Consultation rooms. The front reception offers patients an inviting and relaxed environment and further space includes 2 consult rooms, interview room and staff room.

Client: SAN Hospital Wairoanga
Project Size: 110 sqm
Delivery Method: Construction Management



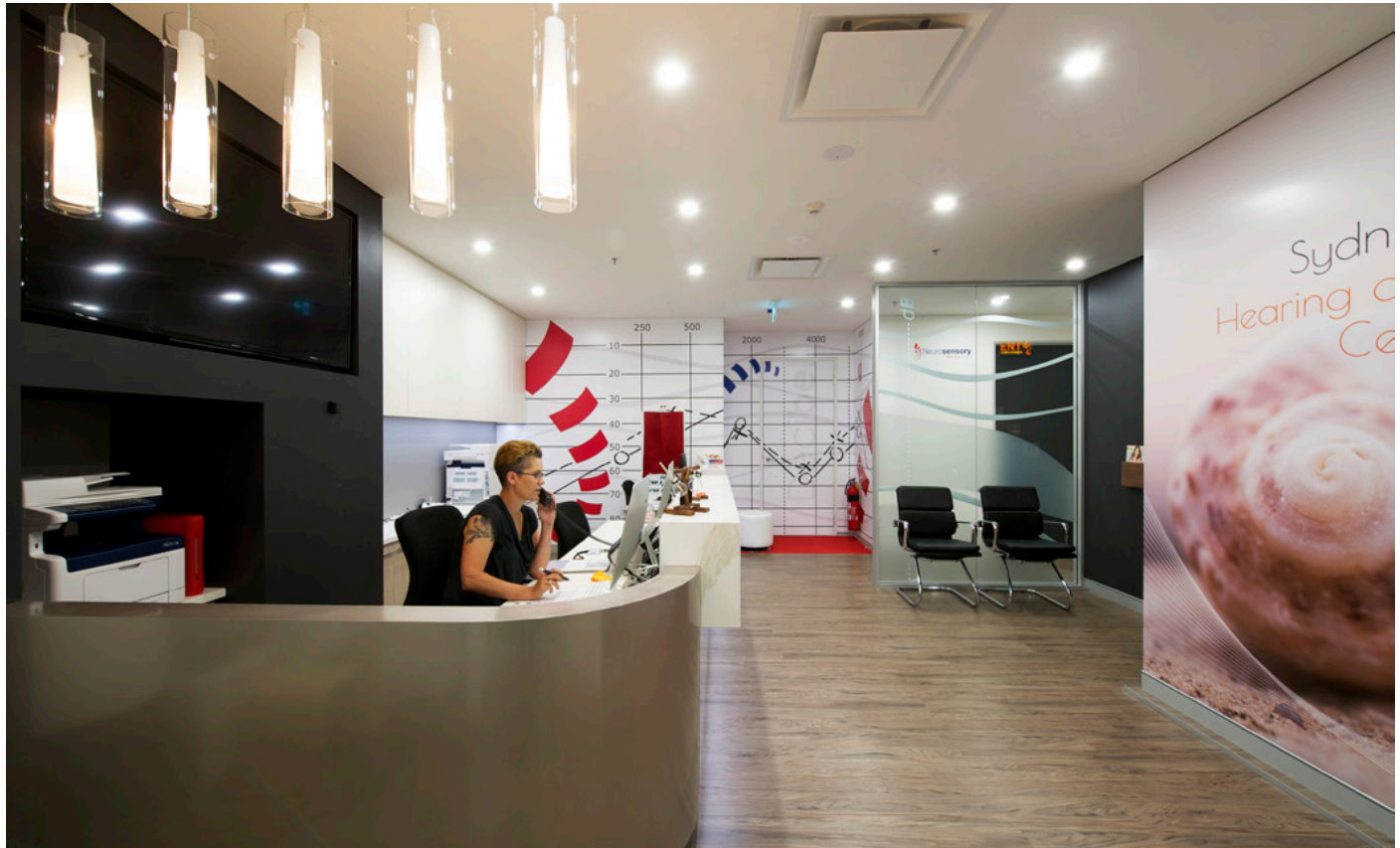
SYDNEY ADVENTIST HOSPITAL WAHROONGA

JDV have established a reputation of delivery excellence in the Medical facilities at the Sydney Adventist Hospital which has resulted in us being engaged to design and construct a number of medical suites for Sydney's most respected medical professionals.

With all medical suites, aesthetics is as important as the ambiance and atmosphere to ensure that the patients are comfortable, relaxed and as much at ease as possible.

Clients: Dr Brian Jones
Associate Professor Munjed Al Muderis
Dr Jason Sharp
Dr Cathy Lee
Professor Tristan Yan
Dr Payal Mukherjee

Project Size: Various
Delivery Method: Design & Construct



HURSTVILLE PRIVATE HOSPITAL UROLOGY PRACTICE

An ongoing relationship with HealthCare, the third largest private hospital operator in Australia, led to JDV Projects being engaged to combine and fitout two existing suites at Hurstville Private Hospital to facilitate the relocation of the Urology Practice to the hospital. Our team worked closely with the tenant appointed designer Curtis + Whitfeld to create a sophisticated environment using calming colours and lighting designed to put patients at ease.

The fitout provided the urology practice with four consulting rooms, treatment rooms, a nurses room and a warm welcoming entry, waiting and reception area. Works were carried out over the Christmas & New Year period to allow drainage to be installed in the Hospital Recovery area while theatre operations were suspended.

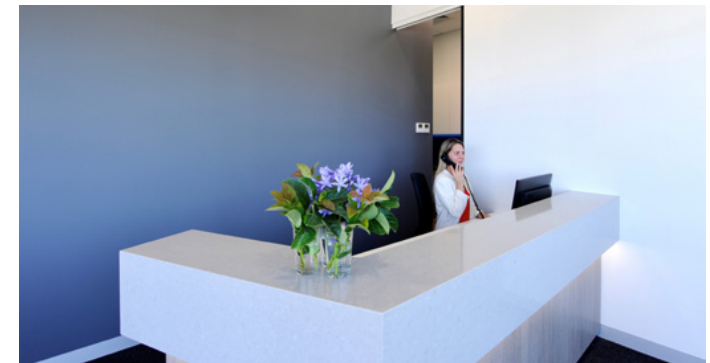
Client: Healthcare
Project Size: 150 sqm
Delivery Method: Construction Management



SOUTHRIDGE MEDICAL CENTRE

A new Medical Suite for Eastern Creek, Southridge Medical is a fresh new facility located in a busy business park. Full of light and colour, the suite offers an open entry with Reception Desk and wait area, a number of consult rooms and kitchen break out space.

Client: Southridge
Project Size: 150sqm
Delivery Method: Design & Construct

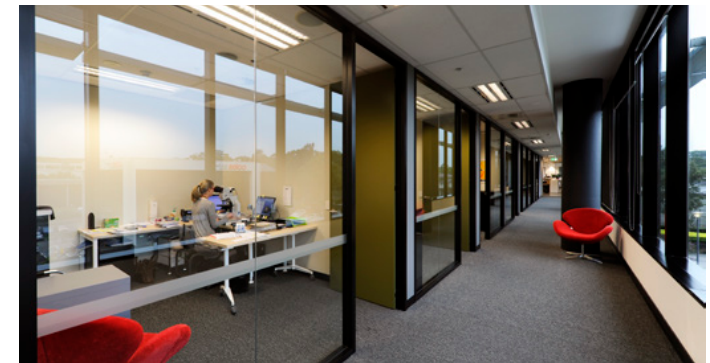


HISTOPATH LABORATORY

Working closely with design firm, The Bold Collective to complete the design & scope in consultation with the client and embracing the technical challenges of accommodating a laboratory facility in a commercial office building, an immovable deadline & rigid budget constraints,

JDV Projects value engineered a result that realised the client's vision of a lab environment that breaks with tradition yet meets the stringent laboratory technical requirements.

Client:	Histopath
Project Size:	1,287sqm
Delivery Method:	Design & Construct



AUSTRALIAN COLLEGE OF NATURAL THERAPIES

The team at JDV created an educational facility for the Australian College of Natural Therapies which combined practical and learning facilities within a heritage building.

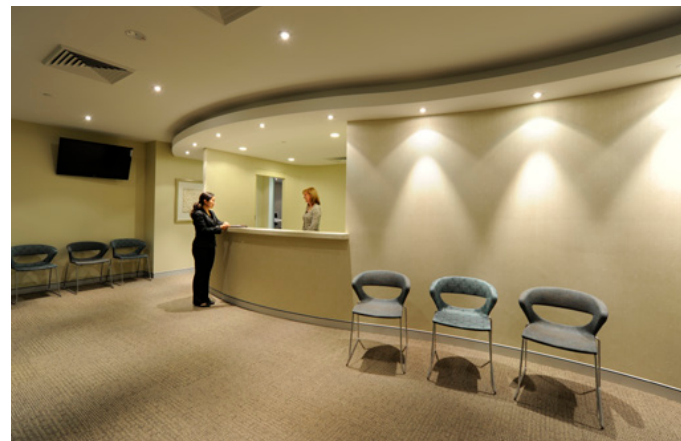
Client: Australian College of Natural Therapies
Project Size: 2,400sqm
Delivery Method: Project & Construction Management



NORWEST PREGNANCY & WOMENS HEALTH CLINIC

JDV Projects undertook a comprehensive design and construct lump sum contract including all statutory consents and approvals. The fit out included a procedure room, consulting rooms, staff amenities and reception from a concrete shell.

Client: Dr Imad Mahmoud Norwest
Pregnancy & Women's Health
Project Size: 150 sqm
Delivery Method: Design & Construct



SKIN BY SARAH HUDSON

Sarah Hudson, owner of Skin by Sarah Hudson is a renowned Sydney Dermal Therapist and Educator. After purchasing a new space in leafy Beecroft, Sarah was looking to create a new clinic in which she would continue to offer medical grade services and innovative skin analysis for the treatment of skin health. Working with the team at JDV Projects, Sarah identified her key requirements for the space and a modern environment was created, using a pallet of deep blues, gold tones and dark wooden flooring.

Client: Sarah Hudson
Project Size: 40 sqm
Delivery Method: Design & Construct



TOP HEALTH DENTAL

JDV Projects were approached in March 2014 to Design and Construct a modern and fresh Dental suite located in Top Ryde. Through a series of meetings, phone calls and interaction with the client, the JDV Design and Construct team were able to define specific objectives for the new practice given the limited allocation of floor space.

The new 87m² Practice consists of 3 surgeries, an inviting Reception, staff area, Practice Managers office, Sterilization room, Lab, OPG room and plant enclosure. The design features wood grain panels contrasting with light modern walls, bringing an earthiness to the interior without losing the contemporary feel. The overall effect is a uniquely styled, contemporary dental practice with a personality of its own.

Client:	Top Health Dental
Project Size:	86 sqm
Delivery Method:	Design & Construct



BELLA VISTA ORTHOPAEDICS

We worked closely with the client, Dr Tack Shin Lee at Bella Vista Orthopaedics to deliver a 'turn key' solution – from planning through to approvals, design and construction.

The project incorporating five consultation rooms, staff kitchenette, office and administration room equipped for 10 staff and a spacious waiting room allowing for 15 patients.

Client: Bella Vista Orthopaedics
Project Size: 150sqm
Delivery Method: Design & Construct



DRUMMOYNE ADVANCED SPECIALTY SERVICES

Drummoyne Advanced is a Specialist Centre for Orthopaedic, Surgical and Medical Specialist Services, located in Sydney's inner west.

After the successful design and fit out of a previous orthopaedic medical suite in Norwest Private Hospital, JDV Projects was commissioned by the same client to design and construct this new, multipurpose medical facility.

The new facility included:

Six consultancy rooms

Three booking rooms

Triage area

A pathology lab

Reception and waiting area

Practice manager's office.

JDV Projects undertook the project via a comprehensive design and construct solution. Responsible for the whole projects from initial project briefing to handover, the fit out was delivered on time and budget.

Client: Norwest Private Hospital

Project Size: 450 sqm

Delivery Method: Design & Construct





FURTHER INFORMATION



ENVIRONMENTAL, WH&S AND QUALITY ACCREDITATION POLICIES

LICENCES

NSW Building Licence No. 245801C
VIC Building Licence No. CBL 37148
ACT Building Licence No. 20138
QLD Building Licence No. 1252854
SA Building Licence No. BLD 307268.

INSURANCES

Public Liability and Contract Works - \$20 million
MBA Insurance Policy No. 01D1996066
Professional Indemnity - \$5 million
MBA Insurance Policy No. MI-SY-04-127290-PI
Workers Compensation - Unlimited
icare Policy No. 109002001

CERTIFICATIONS

JDV Projects is certified and registered through
Global Compliance Certification (GCC) according to:
ISO 9001:2015 Quality
ISO 14001:2001 Environmental
AS/NZS 4801:2015 Work Health & Safety



AFFILIATIONS



QUALITY ASSURANCE SYSTEMS

At JDV projects we operate a cloud-based integrated Project management & document control system, through the secure and controlled software program PROCORE which is one of the world's leading construction management software program.



The system provides a step by step, audited project delivery system ensuring the timely completion, verification and approval of each phase of the project.

- » Secure cloud-based documentation control software
- » Real time access for all stakeholders, clients, consultants, sub-contractors and the project owners
- » Permission based access for confidentiality
- » Document Control & transmittals
- » Shop drawings & sample approvals
- » Request for information tracking & closing
- » Inspections, test plans and progressive signoff/approvals
- » PCG Meeting and progress reporting/photos
- » Site Safety management
- » Observations & Defects capture Management progress
- » Safety, Quality, Environmental & Financial Management



SOME OF OUR VALUED CLIENTS INCLUDE:



 Unit 16, 78 Reserve Road, Artarmon NSW 2064
 +61 (2) 9805 6100
 info@jdvgroup.com.au
 jdvprojects.com.au

